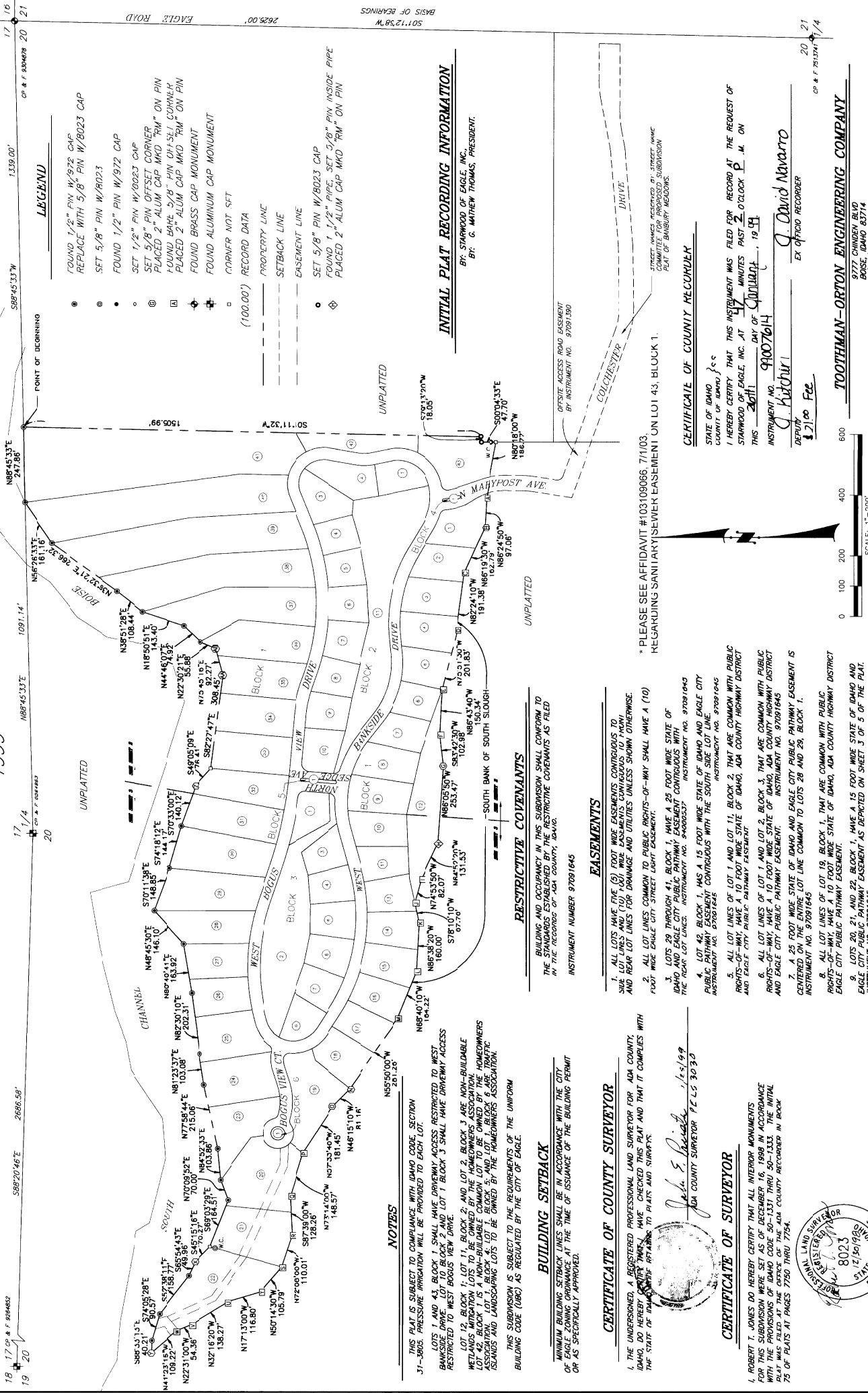


BK 75 PG. 7750

PLAT COPY OF STREAMSIDE SUBDIVISION

BEING THAT PORTION OF GOVERNMENT LOTS 2, 3, AND 4, SECTION 20, T.4N, R.1E, B.M., CITY OF EAGLE, ADA COUNTY, IDAHO, LYING SOUTH OF THE SOUTH CHANNEL OF THE BOISE RIVER, TOGETHER WITH ACCRETION LAND SITUATED IN AND ADJACENT TO LOTS 2, 3, AND 4 AS DESCRIBED IN STATE OF IDAHO DISCLAIMER OF INTEREST NO. 83

1999



LEGEND

- FOUND 1/2" PIN W/972 CAP
- REPLACE WITH 5/8" PIN W/8023 CAP
- SET 5/8" PIN W/8023
- FOUND 1/2" PIN W/972 CAP
- SET 1/2" PIN W/8023 CAP
- SET 5/8" PIN OFFSET CORNER
- FOUND BARE 5/8" PIN OFF-SHIRT CORNER
- PLACED 2" ALUM CAP MKD "RM" ON PIN
- FOUND BRASS CAP MONUMENT
- FOUND ALUMINUM CAP MONUMENT
- CORNER NOT SET
- RECORD DATA (100.00')
- PROPERTY LINE
- SETBACK LINE
- EASEMENT LINE
- SET 5/8" PIN W/8023 CAP
- FOUND 1 1/2" PIPE, SET 5/8" PIN, INSIDE PIPE
- PLACED 2" ALUM CAP MKD "RM" ON PIN

INITIAL PLAT RECORDING INFORMATION

BY: STARWOOD OF EAGLE, INC.
BY: G. MATHEW THOMAS, PRESIDENT.

CERTIFICATE OF COUNTY RECORDER

STATE OF IDAHO COUNTY OF ADAM COUNTY
I HEREBY CERTIFY THAT THIS INSTRUMENT WAS FILED FOR RECORD AT THE REQUEST OF STARWOOD OF EAGLE, INC. AT 47 MINUTES PAST 2 O'CLOCK P.M. ON THIS 20th DAY OF September, 1999.
INSTRUMENT NO. 99007614
DEPUTY RECORDER: David Navarro
EX OFFICIO RECORDER

TOOTHMAN-ORTON ENGINEERING COMPANY

5277 CHERRY BLVD
BOISE, IDAHO 83744
(208) 353-2288

SHEET NO. 1 OF 4

NOTES

1. THIS PLAT IS SUBJECT TO COMPLIANCE WITH IDAHO CODE SECTION 31-8005. PRESSURE IRRIGATION WILL BE PROVIDED TO EACH LOT.
2. LOTS 4 AND 5, BLOCK 1, SHALL HAVE DRIVEWAY ACCESS RESTRICTED TO WEST BANKSIDE DRIVE. LOT 1, BLOCK 1 SHALL HAVE DRIVEWAY ACCESS RESTRICTED TO WEST BOULEVARD VIEW DRIVE.
3. LOT 12, BLOCK 1; LOT 11, BLOCK 2; AND LOT 2, BLOCK 3 ARE NON-BUILDABLE WETLANDS. WETLAND LOTS TO BE OWNED BY THE HOMEOWNERS ASSOCIATION.
4. LOT 42, BLOCK 1 IS A NON-BUILDABLE COMMON LOT TO BE OWNED BY THE HOMEOWNERS ASSOCIATION.
5. ISLANDS AND LANDSCAPING LOTS TO BE OWNED BY THE HOMEOWNERS ASSOCIATION.
6. THIS SUBDIVISION IS SUBJECT TO THE REQUIREMENTS OF THE UNIFORM BUILDING CODE (UBC) AS REGULATED BY THE CITY OF EAGLE.

BUILDING SETBACK

MINIMUM BUILDING SETBACK LINES SHALL BE IN ACCORDANCE WITH THE CITY OF EAGLE ZONING ORDINANCE AT THE TIME OF ISSUANCE OF THE BUILDING PERMIT OR AS SPECIFICALLY APPROVED.

CERTIFICATE OF COUNTY SURVEYOR

I, THE UNDERSIGNED, A REGISTERED PROFESSIONAL LAND SURVEYOR FOR ADA COUNTY, IDAHO, DO HEREBY CERTIFY THAT I HAVE CHECKED THIS PLAT AND THAT IT COMPLES WITH THE STATE OF IDAHO REQUIREMENTS FOR PLATS AND SUBDIVISIONS.

John E. Pritchett 12/1/99
ADA COUNTY SURVEYOR 725 3030

CERTIFICATE OF SURVEYOR

I, ROBERT T. JONES DO HEREBY CERTIFY THAT ALL INTERIOR MONUMENTS FOR THIS SUBDIVISION WERE SET AS OF DECEMBER 16, 1998 IN ACCORDANCE WITH THE PROVISIONS OF IDAHO CODE 50-1331 THRU 50-1333. THE INITIAL PLAT FOR THIS SUBDIVISION WAS FILED IN ADA COUNTY RECORDER IN BOOK 75 OF PLATS AT PAGES 7750 THRU 7754.



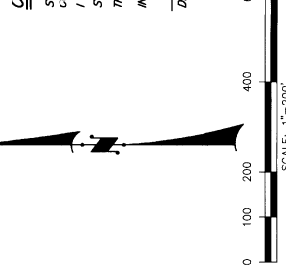
EASEMENTS

1. ALL LOTS HAVE FIVE (5) FOOT WIDE EASEMENTS CONTIGUOUS TO SIDE LOT LINES AND (10) FOOT WIDE EASEMENTS CONTIGUOUS TO FRONT AND REAR LOT LINES FOR DRAINAGE AND UTILITIES UNLESS SHOWN OTHERWISE.
2. ALL LOT LINES COMMON TO PUBLIC RIGHTS-OF-WAY SHALL HAVE A (10) FOOT WIDE EAGLE CITY STREET LIGHT EASEMENT.
3. LOTS 29 THROUGH 41, BLOCK 1, HAVE A 25 FOOT WIDE STATE OF IDAHO AND EAGLE CITY PUBLIC PATHWAY EASEMENT WITH THE REAR LOT LINES. INSTRUMENT NO. 9400037
4. LOT 42, BLOCK 1, HAS A 15 FOOT WIDE STATE OF IDAHO AND EAGLE CITY PUBLIC PATHWAY EASEMENT CONTIGUOUS WITH THE SOUTH SIDE LOT LINE. INSTRUMENT NO. 97081645
5. ALL LOT LINES OF LOT 1 AND LOT 11, BLOCK 2, THAT ARE COMMON WITH PUBLIC RIGHTS-OF-WAY HAVE A 10 FOOT WIDE STATE OF IDAHO, ADA COUNTY HIGHWAY DISTRICT AND EAGLE CITY PUBLIC PATHWAY EASEMENT.
6. ALL LOT LINES OF LOT 1 AND LOT 2, BLOCK 3, THAT ARE COMMON WITH PUBLIC RIGHTS-OF-WAY HAVE A 10 FOOT WIDE STATE OF IDAHO, ADA COUNTY HIGHWAY DISTRICT AND EAGLE CITY PUBLIC PATHWAY EASEMENT. INSTRUMENT NO. 97081645
7. A 25 FOOT WIDE STATE OF IDAHO AND EAGLE CITY PUBLIC PATHWAY EASEMENT IS COMMON WITH THE SOUTH SIDE LOT LINE COMMON TO LOTS 28 AND 29, BLOCK 1. INSTRUMENT NO. 97081645
8. ALL LOT LINES OF LOT 19, BLOCK 1, THAT ARE COMMON WITH PUBLIC RIGHTS-OF-WAY HAVE A 10 FOOT WIDE STATE OF IDAHO, ADA COUNTY HIGHWAY DISTRICT AND EAGLE CITY PUBLIC PATHWAY EASEMENT.
9. LOTS 20, 21, AND 22, BLOCK 1, HAVE A 15 FOOT WIDE STATE OF IDAHO AND EAGLE CITY PUBLIC PATHWAY EASEMENT AS DEPICTED ON SHEET 3 OF 5 OF THE PLAT. INSTRUMENT NO. 97081645
10. LOTS 21 AND 22, BLOCK 1, HAVE ACCESS BY EASEMENT THROUGH LOT 20, BLOCK 1. LOT 22, BLOCK 1 HAS ACCESS BY EASEMENT THROUGH LOT 21, BLOCK 1.

RESTRICTIVE COVENANTS

BUILDING AND OCCUPANCY IN THIS SUBDIVISION SHALL CONFORM TO THE STANDARDS ESTABLISHED BY THE RESTRICTIVE COVENANTS AS FILED IN THE RECORDS OF ADA COUNTY, IDAHO. INSTRUMENT NUMBER 97081645

* PLEASE SEE AFFIDAVIT #103109066, 7/1/03, REGARDING SANITARY SEWER EASEMENT ON LOT 43, BLOCK 1.

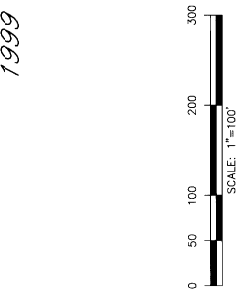


83651 SURVEY PC-1947

PLAT COPY OF STREAMSIDE SUBDIVISION

BEING THAT PORTION OF GOVERNMENT LOTS 2, 3, AND 4, SECTION 20, T.4N., R.1E., B.M., CITY OF EAGLE, ADA COUNTY, IDAHO, LYING SOUTH OF THE SOUTH CHANNEL OF THE BOISE RIVER, TOGETHER WITH ACCRETION LAND SITUATED IN AND ADJACENT TO LOTS 2, 3 AND 4 AS DESCRIBED IN STATE OF IDAHO DISCLAIMER OF INTEREST NO. 93

1999



STATE OF IDAHO ACQUIRED EASEMENT NO. 319
RECREATION TRAIL MAY FOR TRAILING AND OTHER
RECREATIONAL USES - INST. NO. 9406057
PARCEL B

CORNER NOT SET - USE EAS. COR. AS R.M.
N32°28'31\"

39.23

308'-6\"

308'-6\"

308'-6\"

308'-6\"

308'-6\"

308'-6\"

308'-6\"

308'-6\"

308'-6\"

308'-6\"

308'-6\"

308'-6\"

308'-6\"

308'-6\"

308'-6\"

308'-6\"

308'-6\"

308'-6\"

308'-6\"

308'-6\"

308'-6\"

308'-6\"

308'-6\"

308'-6\"

308'-6\"

308'-6\"

308'-6\"

308'-6\"

308'-6\"

308'-6\"

308'-6\"

308'-6\"

308'-6\"

308'-6\"

308'-6\"

308'-6\"

308'-6\"

308'-6\"

308'-6\"

308'-6\"

308'-6\"

308'-6\"

308'-6\"

308'-6\"

308'-6\"

308'-6\"

308'-6\"

308'-6\"

308'-6\"

308'-6\"

LOT-BLOCK	FRONT	REAR	SIDE	REAR
1	30'	15'	30'	15'
2	30'	15'	30'	15'
3	30'	15'	30'	15'
4	30'	15'	30'	15'
5	30'	15'	30'	15'
6	30'	15'	30'	15'
7	30'	15'	30'	15'
8	30'	15'	30'	15'
9	30'	15'	30'	15'
10	30'	15'	30'	15'
11	30'	15'	30'	15'
12	30'	15'	30'	15'
13	30'	15'	30'	15'
14	30'	15'	30'	15'
15	30'	15'	30'	15'
16	30'	15'	30'	15'
17	30'	15'	30'	15'
18	30'	15'	30'	15'
19	30'	15'	30'	15'
20	30'	15'	30'	15'
21	30'	15'	30'	15'
22	30'	15'	30'	15'
23	30'	15'	30'	15'
24	30'	15'	30'	15'
25	30'	15'	30'	15'
26	30'	15'	30'	15'
27	30'	15'	30'	15'
28	30'	15'	30'	15'
29	30'	15'	30'	15'
30	30'	15'	30'	15'
31	30'	15'	30'	15'
32	30'	15'	30'	15'
33	30'	15'	30'	15'
34	30'	15'	30'	15'
35	30'	15'	30'	15'
36	30'	15'	30'	15'
37	30'	15'	30'	15'
38	30'	15'	30'	15'
39	30'	15'	30'	15'
40	30'	15'	30'	15'
41	30'	15'	30'	15'
42	30'	15'	30'	15'
43	30'	15'	30'	15'
44	30'	15'	30'	15'
45	30'	15'	30'	15'
46	30'	15'	30'	15'
47	30'	15'	30'	15'
48	30'	15'	30'	15'
49	30'	15'	30'	15'
50	30'	15'	30'	15'
51	30'	15'	30'	15'
52	30'	15'	30'	15'
53	30'	15'	30'	15'
54	30'	15'	30'	15'
55	30'	15'	30'	15'
56	30'	15'	30'	15'
57	30'	15'	30'	15'
58	30'	15'	30'	15'
59	30'	15'	30'	15'
60	30'	15'	30'	15'
61	30'	15'	30'	15'
62	30'	15'	30'	15'
63	30'	15'	30'	15'
64	30'	15'	30'	15'
65	30'	15'	30'	15'
66	30'	15'	30'	15'
67	30'	15'	30'	15'
68	30'	15'	30'	15'
69	30'	15'	30'	15'
70	30'	15'	30'	15'
71	30'	15'	30'	15'
72	30'	15'	30'	15'
73	30'	15'	30'	15'
74	30'	15'	30'	15'
75	30'	15'	30'	15'
76	30'	15'	30'	15'
77	30'	15'	30'	15'
78	30'	15'	30'	15'
79	30'	15'	30'	15'
80	30'	15'	30'	15'
81	30'	15'	30'	15'
82	30'	15'	30'	15'
83	30'	15'	30'	15'
84	30'	15'	30'	15'
85	30'	15'	30'	15'
86	30'	15'	30'	15'
87	30'	15'	30'	15'
88	30'	15'	30'	15'
89	30'	15'	30'	15'
90	30'	15'	30'	15'
91	30'	15'	30'	15'
92	30'	15'	30'	15'
93	30'	15'	30'	15'
94	30'	15'	30'	15'
95	30'	15'	30'	15'
96	30'	15'	30'	15'
97	30'	15'	30'	15'
98	30'	15'	30'	15'
99	30'	15'	30'	15'
100	30'	15'	30'	15'

NOTES: ALL SETBACKS MEET/EXCEED ZONING CODE REQUIREMENT

*1 - E. SIDE WARD 30' FROM STREET LINE, W. SIDE WARD 15' FROM

LOT LINE

** - ROAD WARD MEASURED FROM FRONT & CORNER

** - ROAD WARD MEASURED FROM CONSERVATION EAS.

** - E. SIDE WARD 30' FROM LOT LINE

** - WARD 30' FROM STREET LINE

** - WARD 30' FROM STREET LINE

** - WARD 30' FROM STREET LINE

** - WARD 30' FROM STREET LINE

** - WARD 30' FROM STREET LINE

** - WARD 30' FROM STREET LINE

** - WARD 30' FROM STREET LINE

** - WARD 30' FROM STREET LINE

** - WARD 30' FROM STREET LINE

** - WARD 30' FROM STREET LINE

** - WARD 30' FROM STREET LINE

** - WARD 30' FROM STREET LINE

** - WARD 30' FROM STREET LINE

** - WARD 30' FROM STREET LINE

** - WARD 30' FROM STREET LINE

** - WARD 30' FROM STREET LINE

** - WARD 30' FROM STREET LINE

** - WARD 30' FROM STREET LINE

** - WARD 30' FROM STREET LINE

** - WARD 30' FROM STREET LINE

** - WARD 30' FROM STREET LINE

** - WARD 30' FROM STREET LINE

** - WARD 30' FROM STREET LINE

** - WARD 30' FROM STREET LINE

** - WARD 30' FROM STREET LINE

** - WARD 30' FROM STREET LINE

** - WARD 30' FROM STREET LINE

** - WARD 30' FROM STREET LINE

** - WARD 30' FROM STREET LINE

** - WARD 30' FROM STREET LINE

** - WARD 30' FROM STREET LINE

** - WARD 30' FROM STREET LINE

** - WARD 30' FROM STREET LINE

** - WARD 30' FROM STREET LINE

** - WARD 30' FROM STREET LINE

** - WARD 30' FROM STREET LINE

** - WARD 30' FROM STREET LINE

** - WARD 30' FROM STREET LINE

** - WARD 30' FROM STREET LINE

** - WARD 30' FROM STREET LINE

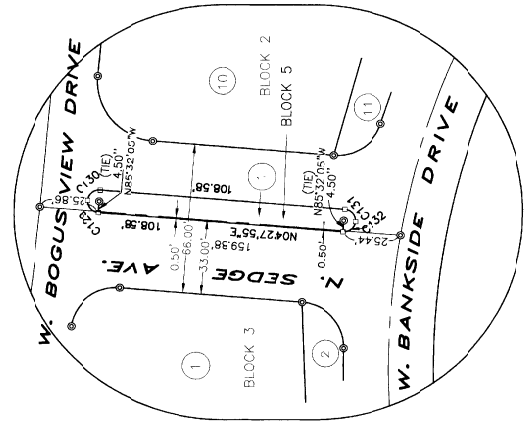
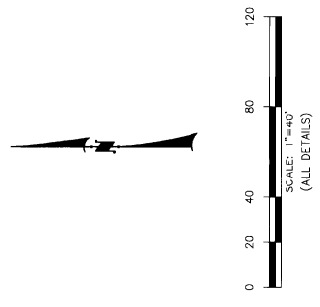
** - WARD 30' FROM STREET LINE

CURVE	RADIUS	LENGTH	TANGENT	CHORD	BEARINGS	DELT
C1	105.00'	184.91'	105.00'	148.64'	S10°54'43\"	90°00'00\"
C2	170.00'	65.92'	33.38'	65.92'	S00°54'43\"	22°12'57\"
C3	80.00'	84.75'	46.84'	80.84'	S00°09'15\"	60°42'00\"
C4	80.00'	84.75'	46.84'	80.84'	S05°11'15\"	60°42'00\"
C5	720.00'	106.80'	53.40'	106.81'	N83°31'15\"	98°29'00\"
C6	720.00'	106.80'	53.40'	106.81'	N88°59'45\"	98°29'00\"
C7	720.00'	106.80'	53.40'	106.81'	N88°59'45\"	98°29'00\"
C8	720.00'	106.80'	53.40'	106.81'	N88°59'45\"	98°29'00\"
C9	720.00'	106.80'	53.40'	106.81'	N88°59'45\"	98°29'00\"
C10	405.00'	111.00'	55.50'	111.00'	N72°00'00\"	101°33'23\"
C11	405.00'	111.00'	55.50'	111.00'	N72°00'00\"	101°33'23\"
C12	405.00'	111.00'	55.50'	111.00'	N72°00'00\"	101°33'23\"
C13	20.00'	26.99'	16.00'	26.99'	N34°11'47\"	70°19'24\"
C14	379.00'	129.88'	65.61'	129.21'	N67°48'07\"	27°06'44\"
C15	280.00'	204.20'	109.65'	204.20'	S74°07'54\"	42°46'19\"
C16	280.00'	204.20'	109.65'	204.20'	S74°07'54\"	42°46'19\"
C17	175.00'	128.01'	67.02'	125.18'	S81°03'51\"	41°54'42\"
C18	215.00'	24.16'	26.72'	23.02'	S67°11'30\"	141°00'15\"
C19	20.00'	24.16'	13.80'	22.72'	S39°40'16\"	69°12'28\"
C20	251.56'	28.15'	27.94'	27.94'	S71°43'36\"	14°21'12\"
C21	251.56'	28.15'	27.94'	27.94'	S71°43'36\"	14°21'12\"
C22	175.00'	42.68'	21.85'	42.68'	S59°20'16\"	41°19'26\"
C23	460.00'	80.48'	40.33'	80.35'	S65°07'08\"	10°01'11\"
C24	460.00'	116.23'	58.43'	115.92'	S77°22'06\"	14°28'39\"
C25	460.00'	87.60'	43.93'	87.46'	N88°56'15\"	10°54'36\"
C26	320.00'	91.64'	46.30'	91.64'	S87°17'08\"	16°27'55\"
C27	320.00'	91.64'	46.30'	91.64'	S87°17'08\"	16°27'55\"
C28	320.00'	91.64'	46.30'	91.64'	S87°17'08\"	16°27'55\"
C29	320.00'	121.05'	61.21'	120.37'	S63°15'15\"	21°00'59\"
C30	320.00'	121.05'	61.21'	120.37'	S63°15'15\"	21°00'59\"
C31	445.00'	50.11'	55.00'	50.60'	N15°36'30\"	65°57'08\"
C32	445.00'	50.11'	55.00'	50.60'	N15°36'30\"	65°57'08\"
C33	680.00'	20.82'	10.31'	20.82'	N71°0'53\"	01°44'16\"
C34	680.00'	124.92'	62.63'	124.74'	N78°18'47\"	10°31'31\"
C35	680.00'	130.00'	65.20'	129.80'	N89°03'08\"	10°57'13\"
C36	680.00'	130.00'	65.20'	129.80'	N89°03'08\"	10°57'13\"
C37	680.00'	130.00'	65.20'	129.80'	N89°03'08\"	10°57'13\"
C38	120.00'	100.00'	53.11'	97.33'	N57°13'57\"	47°44'47\"
C39	120.00'	100.00'	53.11'	97.33'	N57°13'57\"	47°44'47\"
C40	120.00'	80.70'	41.94'	79.19'	N09°04'14\"	38°31'58\"
C41	130.00'	50.41'	25.52'	50.09'	N07°54'43\"	22°12'57\"
C42	145.00'	68.91'	30.33'	68.91'	N15°36'30\"	65°57'08\"
C43	145.00'	68.91'	30.33'	68.91'	N15°36'30\"	65°57'08\"
C44	215.00'	7.51'	7.16'			

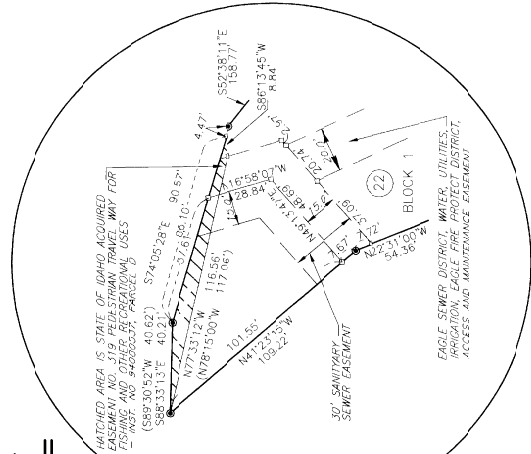
PLAT COPY OF STREAMSIDE SUBDIVISION

DETAIL SHEET

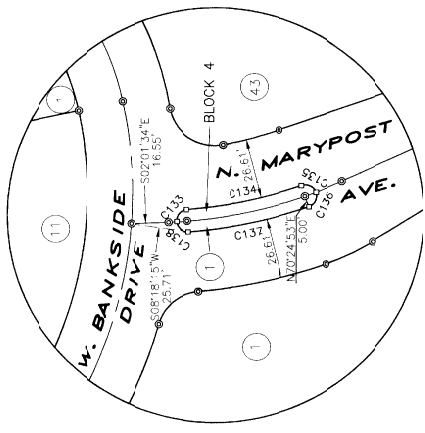
CURVE	ADIUS	LENGTH	TANGENT	CHORD	BEARING	DELTA
C176	50.00	63.44	36.80	58.27	S88°30'56"E	72°42'08"
C178	110.00	152.88	91.70	140.67	N17°52'44"W	79°17'51"
C114	170.00	55.28	27.89	55.04	N85°36'33"W	18°37'51"
C115	10.00	10.72	5.94	10.21	N45°35'59"W	61°23'36"
C116	170.00	32.57	16.31	31.40	S78°51'44"W	12°13'54"
C117	170.00	51.73	28.21	51.39	S89°02'06"W	22°47'52"
C118	130.00	51.73	28.21	51.39	S89°02'06"W	22°47'52"
C119	710.00	22.34	11.17	22.34	S75°19'32"W	01°48'10"
C120	140.00	91.97	47.66	90.23	S55°37'33"W	37°35'48"
C121	130.00	13.96	6.98	13.78	N78°44'16"W	01°19'23"
C122	130.00	13.96	6.98	13.78	N78°44'16"W	01°19'23"
C123	150.00	13.28	7.11	12.85	N89°29'27"E	50°42'52"
C124	225.00	129.85	66.79	128.05	N89°18'54"E	33°03'57"
C125	190.00	12.06	7.35	11.85	S31°20'59"E	72°39'15"
C126	140.00	57.19	29.00	56.79	S06°43'23"E	23°24'10"
C127	140.00	57.19	29.00	56.79	S06°43'23"E	23°24'10"
C128	90.00	19.15	9.61	19.11	N25°31'55"E	12°11'18"
C129	5.00	7.85	5.00	7.07	S49°27'55"W	90°00'00"
C130	5.00	7.85	5.00	7.07	S49°27'55"W	90°00'00"
C131	5.00	7.85	5.00	7.07	S49°27'55"W	90°00'00"
C132	5.00	7.85	5.00	7.07	S49°27'55"W	90°00'00"
C133	5.00	7.85	5.00	7.07	S49°27'55"W	90°00'00"
C134	195.00	51.95	26.13	51.80	N15°57'12"E	15°15'51"
C135	5.00	7.85	5.00	7.07	S25°24'53"W	90°00'00"
C136	5.00	7.85	5.00	7.07	S25°24'53"W	90°00'00"
C137	205.00	54.61	27.47	54.45	N15°17'14"W	15°15'51"
C138	5.00	7.85	5.00	7.07	N49°40'44"E	90°00'00"



LOT 1 BLOCK 5



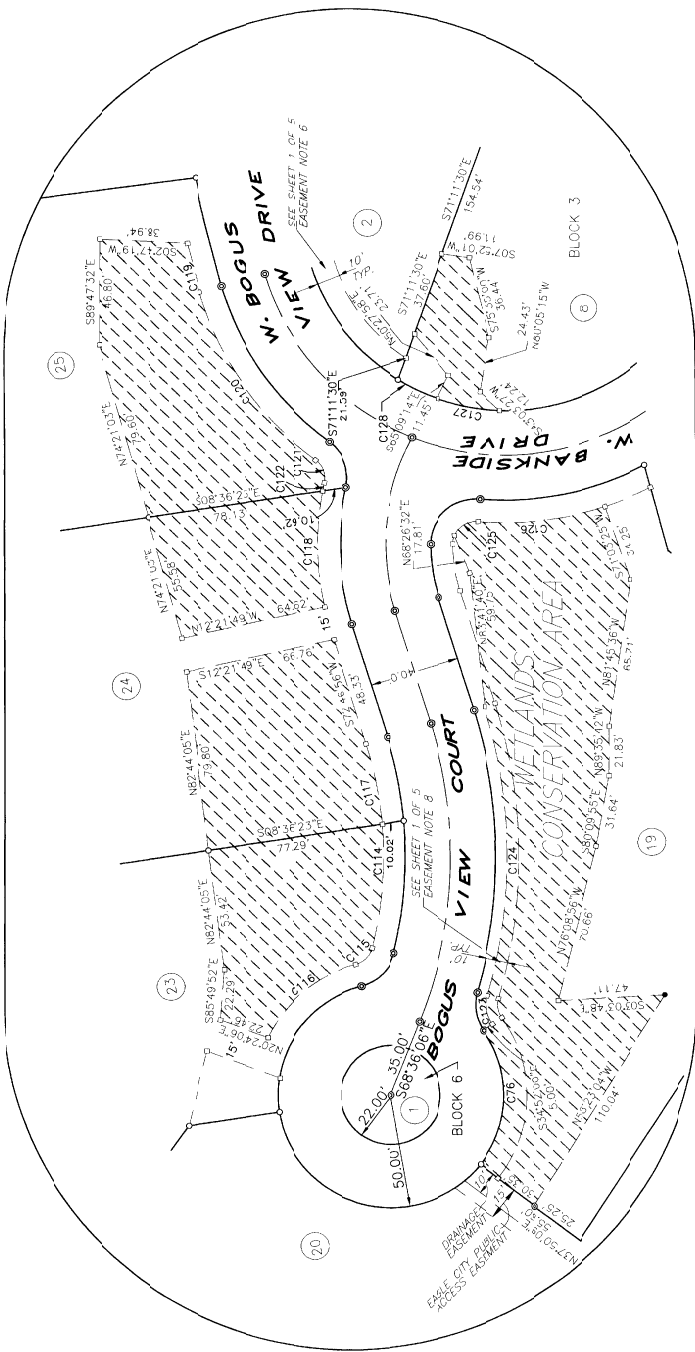
EASEMENTS
LOT 22, BLOCK 1



LOT 1 BLOCK 4



TOOTHMAN-ORTON ENGINEERING COMPANY
 9177 CLEVELAND BLVD
 BOSS LANDING 9514
 (216) 345-4266



WETLANDS CONSERVATION AREA
 LOTS 19, 23, 24 AND 25, BLOCK 1 AND LOT 8, BLOCK 3

STREAMSIDE SUBDIVISION

CERTIFICATE OF OWNERS

KNOW ALL MEN BY THESE PRESENTS THAT THE UNDERSIGNED IS THE OWNER OF THE PROPERTY HERINAFTER DESCRIBED:

A parcel of land being a portion of Government Lots 2, 3 and 4 lying south of the South Channel of the Boise River, in the Streamside Subdivision, Ada County, Idaho, and more particularly described as follows:

COMMENCING at a brass cap in the center of Eagle Road which marks the northeast corner of said Section 20, T.4N., R.1E., E.4M., Eagle, Ada County, Idaho, and more particularly described as follows:

Section 20, T.4N., R.1E., E.4M., Eagle, Ada County, Idaho, and more particularly described as follows:

Section 20, T.4N., R.1E., E.4M., Eagle, Ada County, Idaho, and more particularly described as follows:

Section 20, T.4N., R.1E., E.4M., Eagle, Ada County, Idaho, and more particularly described as follows:

- 1.) S. 01° 11' 32" W., 1,505.99 feet along the line between said Lots 1 and 2 to a point in the southerly line of a private road as encroached in abstract of judgment instrument No. 8249559, Case No. 61059, hence;
- 2.) S. 73° 00' 00" E., 18.05 feet along said westerly line, hence;
- 3.) S. 73° 00' 00" E., 18.05 feet along said westerly line, hence;
- 4.) N. 80° 18' 00" W., 186.77 feet; thence;
- 5.) N. 86° 24' 00" W., 97.06 feet; thence;
- 6.) N. 66° 19' 30" W., 162.79 feet; thence;
- 7.) N. 71° 30' 00" W., 101.85 feet; thence;
- 8.) N. 75° 51' 30" W., 101.85 feet; thence;
- 9.) N. 68° 43' 00" W., 150.34 feet; thence;
- 10.) S. 83° 42' 30" W., 102.98 feet; thence;
- 11.) N. 86° 05' 00" W., 253.47 feet; thence;
- 12.) N. 64° 52' 00" W., 131.53 feet; thence;
- 13.) N. 74° 53' 00" W., 82.07 feet; thence;
- 14.) S. 78° 10' 10" W., 67.76 feet; thence;
- 15.) N. 66° 40' 10" W., 164.22 feet; thence;
- 16.) N. 68° 40' 10" W., 164.22 feet; thence;
- 17.) N. 55° 00' 00" W., 281.26 feet; thence;
- 18.) N. 65° 15' 00" W., 81.16 feet; thence;
- 19.) N. 62° 45' 00" W., 161.45 feet; thence;
- 20.) S. 72° 30' 00" W., 169.97 feet; thence;
- 21.) S. 82° 30' 00" W., 110.01 feet; thence;
- 22.) N. 72° 08' 00" W., 110.01 feet; thence;
- 23.) N. 50° 14' 30" W., 105.79 feet; thence;
- 24.) N. 17° 33' 00" W., 116.80 feet; thence;
- 25.) N. 32° 16' 20" W., 138.27 feet; thence;
- 26.) N. 22° 31' 00" W., 54.36 feet; thence;
- 27.) N. 41° 23' 15" W., 109.22 feet to the point of intersection of said Highway line of the South Channel of the Boise River with the southerly meander-line of the South Channel of the Boise River, and then along said southerly meander-line of the South Channel of the Boise River the following courses:
- 28.) S. 88° 39' 19" E., 40.81 feet; thence;
- 29.) S. 74° 05' 28" E., 90.57 feet; thence;
- 30.) S. 52° 38' 11" E., 156.77 feet; thence;
- 31.) S. 65° 54' 43" E., 49.86 feet; thence;
- 32.) S. 4° 15' 10" E., 70.87 feet; thence;
- 33.) S. 69° 03' 29" E., 164.51 feet; thence;
- 34.) N. 70° 09' 52" E., 70.00 feet; thence;
- 35.) N. 86° 53' 42" E., 103.86 feet; thence;
- 36.) N. 87° 38' 14" E., 210.08 feet; thence;
- 37.) N. 87° 30' 00" E., 202.31 feet; thence;
- 38.) N. 82° 40' 41" E., 163.92 feet; thence;
- 39.) N. 82° 40' 41" E., 163.92 feet; thence;
- 40.) N. 48° 45' 30" E., 146.10 feet; thence;
- 41.) S. 70° 11' 38" E., 148.85 feet; thence;
- 42.) S. 74° 18' 12" E., 144.17 feet; thence;
- 43.) S. 70° 33' 00" E., 140.12 feet; thence;
- 44.) S. 49° 05' 09" E., 76.41 feet; thence;
- 45.) S. 82° 27' 47" E., 306.45 feet; thence;
- 46.) N. 75° 45' 16" E., 92.27 feet; thence;
- 47.) N. 22° 30' 21" E., 55.88 feet; thence;
- 48.) N. 44° 46' 07" E., 74.66 feet; thence;
- 49.) N. 85° 05' 16" E., 143.40 feet; thence;
- 50.) N. 35° 32' 21" E., 266.92 feet; thence;
- 51.) N. 52° 26' 33" E., 161.16 feet to a point in the northerly line of said Section 20; thence;
- 52.) N. 52° 26' 33" E., 161.16 feet to a point in the northerly line of said Section 20; thence;
- 53.) N. 88° 45' 33" E., 247.86 feet along said northerly section line to the POINT OF BEGINNING,

said parcel containing 51.50 acres, more or less.

IT IS THE INTENTION OF THE UNDERSIGNED TO AND THEY DO HEREBY INCLUDE SAID LAND IN THIS PLAT THAT THE UNDERSIGNED OWNS BY THESE PRESENTS. DEDICATE TO THE PUBLIC USE FOREVER ALL PUBLIC STREETS AS SHOWN ON THIS PLAT THAT THE EASEMENTS INDICATED ON THIS PLAT ARE NOT DEDICATED TO THE PUBLIC USE AND ARE RESERVED FOR THE PRIVATE USE OF THE UNDERSIGNED. RESERVED FOR PUBLIC UTILITIES AND FOR SUCH OTHER USES AS ARE HEREOF DESIGNATED.

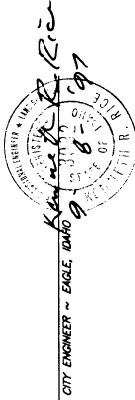
ALL OF THE LOTS IN THIS SUBDIVISION WILL BE ELIGIBLE TO RECEIVE WATER SERVICE FROM UNITED WATER IDAHO, INC., A PUBLIC UTILITY SUBJECT TO THE REGULATIONS OF THE IDAHO PUBLIC UTILITIES COMMISSION, AND SAID WATER COMPANY HAS AGREED IN WRITING TO SERVE ALL OF SAID LOTS.

IN WITNESS WHEREOF, I HAVE HERETO SET MY HAND THIS 1st DAY OF August, 1997.

Matthew Thomas
MATTHEW THOMAS
PRESIDENT

APPROVAL OF THE CITY ENGINEER

I, THE UNDERSIGNED CITY ENGINEER IN AND FOR THE CITY OF EAGLE, ADA COUNTY, IDAHO, HEREBY APPROVE THIS PLAT OF "STREAMSIDE SUBDIVISION".



APPROVAL OF CENTRAL DISTRICT HEALTH DEPARTMENT

SAINTARY RESTRICTIONS ON THIS PLAT ARE HEREBY REMOVED ACCORDING TO THE LETTER TO BE READ ON FILE WITH THE COUNTY RECORDER ON HIS AGENT LISTING THE CONDITIONS OF APPROVAL.



Sharon E. Johnson 8/20/97
APPROVAL

ADA COUNTY HIGHWAY DISTRICT COMMISSIONERS ACCEPTANCE

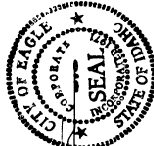
THE FOREGOING PLAT WAS ACCEPTED AND APPROVED BY THE BOARD OF ADA COUNTY DISTRICT COMMISSIONERS ON THE 1st DAY OF AUGUST 1997.



Sharon E. Johnson
ADA COUNTY HIGHWAY DISTRICT

APPROVAL OF THE CITY COUNCIL

I, THE UNDERSIGNED CITY CLERK IN AND FOR THE CITY OF EAGLE, ADA COUNTY, IDAHO, HEREBY CERTIFY THAT AT A REGULAR MEETING OF THE CITY COUNCIL HELD ON THE 25th DAY OF August, 1997, THIS PLAT OF "STREAMSIDE SUBDIVISION" WAS DULY ACCEPTED AND APPROVED.



Keneth R. Rice
CITY CLERK - EAGLE, IDAHO

ACKNOWLEDGMENT

STATE OF IDAHO }
COUNTY OF ADA }

ON THIS 1st DAY OF Aug, 1997, BEFORE ME THE UNDERSIGNED, A NOTARY PUBLIC IN AND FOR SAID STATE PERSONALLY APPEARED G. MATTHEW THOMAS, KNOWN TO ME TO BE THE PRESIDENT OF STARWOOD OF EAGLE, INC., AND THE PERSON WHO ENGAGED THE FOREGOING INSTRUMENT ON BEHALF OF SAID CORPORATION AND ACKNOWLEDGED TO ME THAT SUCH CORPORATION DO EXECUTE THE SAME.

IN WITNESS WHEREOF, I HAVE HERETO SET MY HAND AND SEAL THE DAY AND YEAR IN THIS CERTIFICATE FIRST ABOVE WRITTEN.



Matthew Thomas
MATTHEW THOMAS
RESIDING AT Ada, Idaho, I.D.
MY COMMISSION EXPIRES 1-26-99

CERTIFICATE OF THE COUNTY TREASURER

I, THE UNDERSIGNED, COUNTY TREASURER IN AND FOR THE COUNTY OF ADA, STATE OF IDAHO, PER THE REQUIREMENTS OF I.C. 50-1308, DO HEREBY CERTIFY THAT ANY AND ALL CURRENT AND OR DELINQUENT COUNTY PROPERTY TAXES FOR THE PROPERTY INCLUDED IN THIS SUBDIVISION HAVE BEEN PAID IN FULL. THIS CERTIFICATION IS VALID FOR THE NEXT THIRTY (30) DAYS ONLY.



DATE 10 Aug 1997
Barbara Davis
COUNTY TREASURER

CERTIFICATE OF COUNTY SURVEYOR

I, THE UNDERSIGNED, A REGISTERED PROFESSIONAL LAND SURVEYOR FOR ADA COUNTY, IDAHO, DO HEREBY CERTIFY THAT I HAVE CHECKED THIS PLAT AND THAT IT COMPLIES WITH THE STATE OF IDAHO CODE RELATING TO PLATS AND SURVEYS.



ADA COUNTY SURVEYOR

CERTIFICATE OF COUNTY RECORDER

STATE OF IDAHO
COUNTY OF IDAHO }
I HEREBY CERTIFY THAT THIS INSTRUMENT WAS FILED FOR RECORD AT THE REQUEST OF

STARWOOD OF EAGLE, INC. AT 50 MINUTES PAST 9 O'CLOCK A. M. ON

THIS 12 DAY OF Aug, 1997

INSTRUMENT NO. 97094160

DEPUTY

David Hovine
DEPUTY COUNTY RECORDER

26 90

CERTIFICATE OF SURVEYOR

I, ROBERT T. JONES DO HEREBY CERTIFY THAT I AM A REGISTERED LAND SURVEYOR IN THE STATE OF IDAHO, AND THAT THIS PLAT AS DESCRIBED IN THE "CERTIFICATE OF OWNERS" WAS DRAWN FROM THE FIELD NOTES OF A SURVEY MADE ON THE GROUND UNDER MY DIRECT SUPERVISION AND ACCURATELY REPRESENTS THE POINTS PLATED HEREON, AND IS IN CONFORMITY WITH THE STATE OF IDAHO CODE RELATING TO PLATS AND SURVEYS.



ROBERT T. JONES
IDAHO NO. 8023

TOOTHMAN-ORTON ENGINEERING COMPANY

9772 CHANDLER BLVD
BOISE, IDAHO 83724
(208) 323-2288