

# LAKEWOOD UNIT NO. 3

T.3N., R.2E., B.M.

SW 1/4 OF SEC. 23 & NW 1/4 OF SEC. 26

ADA COUNTY,

IDAHO

S 1/4 COR. SEC. 23

CENTERLINE CURVE DATA

Cur. No.	Radius	Δ	Tangent Length
1	178.87	29.43	32.43
2	220.37	20.52	24.52
3	45.00	57.28	12.01
4	45.00	62.14	27.24
5	30.96	22.53	16.48
6	30.00	90.00	80.00
7	150.00	57.91	26.01
8	45.00	47.75	10.71
9	45.00	44.54	10.50
10	45.00	44.54	10.50

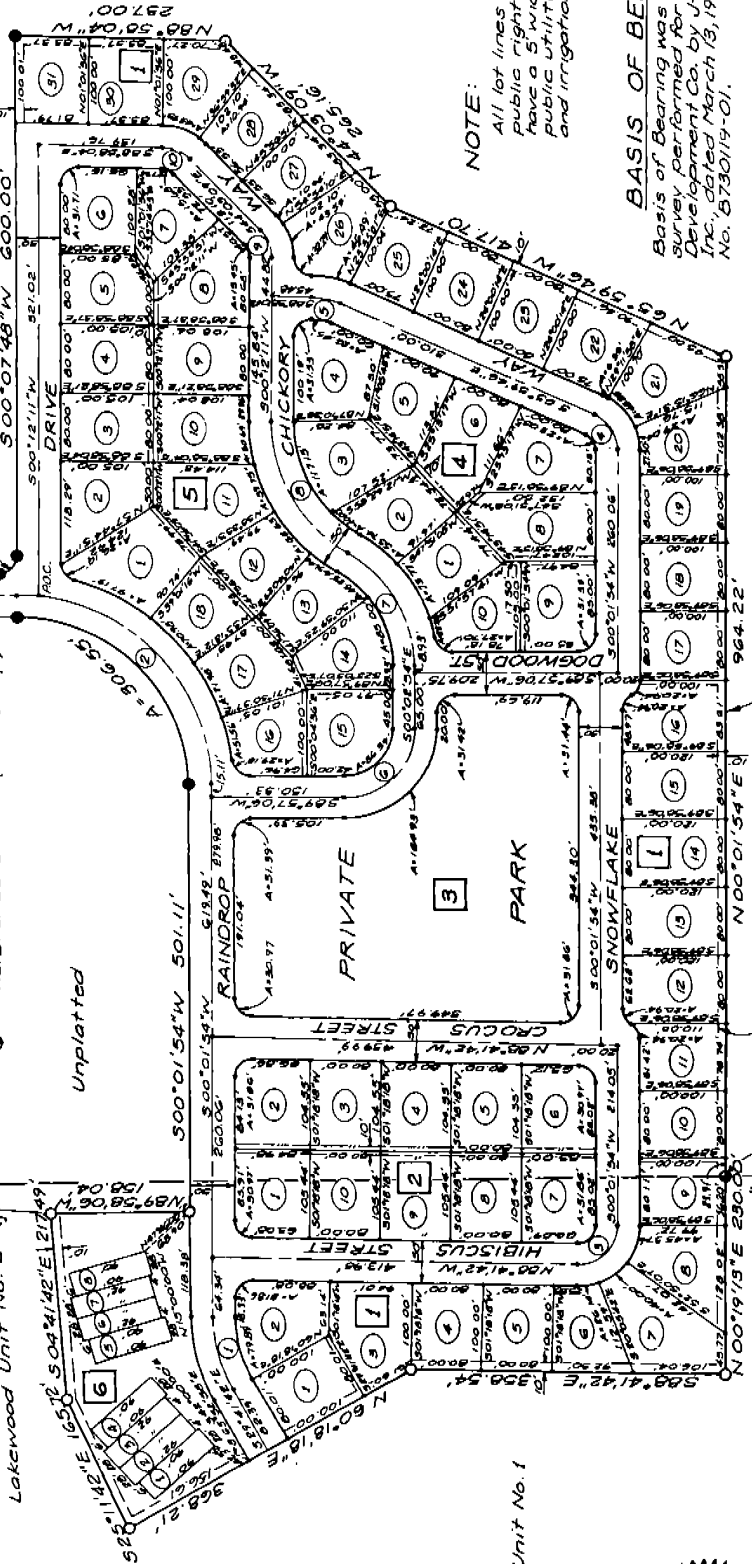
Curb return radii are 2000'

THIS IS NOT A SURVEY. THIS MAP IS FOR INFORMATIONAL PURPOSES ONLY. PIONEER TITLE COMPANY MAKES NO REPRESENTATIONS AS TO THE ACCURACY OF THE MAP AND ASSUMES NO LIABILITY FOR IT.



SCALE: 1"=100'

- LEGEND**
- 1/2" Lot Corner Pin (Set)
  - Found Steel Pin
  - 5/8"x30" Steel Pin (Set)
  - ④ Curve Number
  - ⑩ Lot Number
  - ② Block Number
  - Easement Line
  - Reference Corner (Bress Cap)



**NOTE:**  
All lot lines common to a public right-of-way line have a 5' wide permanent public utilities, drainage and irrigation easement.

**BASIS OF BEARING**  
Basis of Bearing was taken from a survey performed for Triangle Development Co. by J.U.B. Engineers, Inc., dated March 15, 1973, Drawing No. 8730119-01.

Approved: *[Signature]* 7-6-76  
CH2M HILL  
BOISE, IDAHO  
DECEMBER 1975

Sanitary restrictions of this plat are hereby removed according to the letter of approval on file with the county recorder or his agent  
23 Jan 1976  
Date  
Gary Strick EHS  
Environmental Quality Specialist

Revisions: 1-23 19  
Revisions: 7-1-76  
Amend. Revisions: 7-23 76  
7-3-76

